



CENTR Update

Peter Van Roste
CENTR

17 February 2011
APTLD GA
Hong Kong

CENTR Passport

Full name : **C**ouncil of **E**uropean **N**ational **T**op Level Domain
Registries

Membership: **50** Full members (ccTLD registries from Europe and beyond)
10 Associate members (gTLD registries, ccTLDs outside Europe)
12 Observers

Staff: Brussels based secretariat with **4** staff

1. Statistical Survey
2. ccTLDs as intermediaries?
3. Membership Fee Structure (time allowing)

1. Statistical Survey

Background to the survey

MOTIVATION

There is a lack of centralised and formalised data in the CENTR community relating to basic ccTLD statistics.

OBJECTIVES OF THE SURVEY

- To contribute to more formalised structure of statistics in the community allowing for a better visualization of the evolution of our industry.
- To allow for a benchmark on differing metrics to aid members in making business decisions.
- To highlight any trends emerging in our sector
- To show possible strengths and weakness'

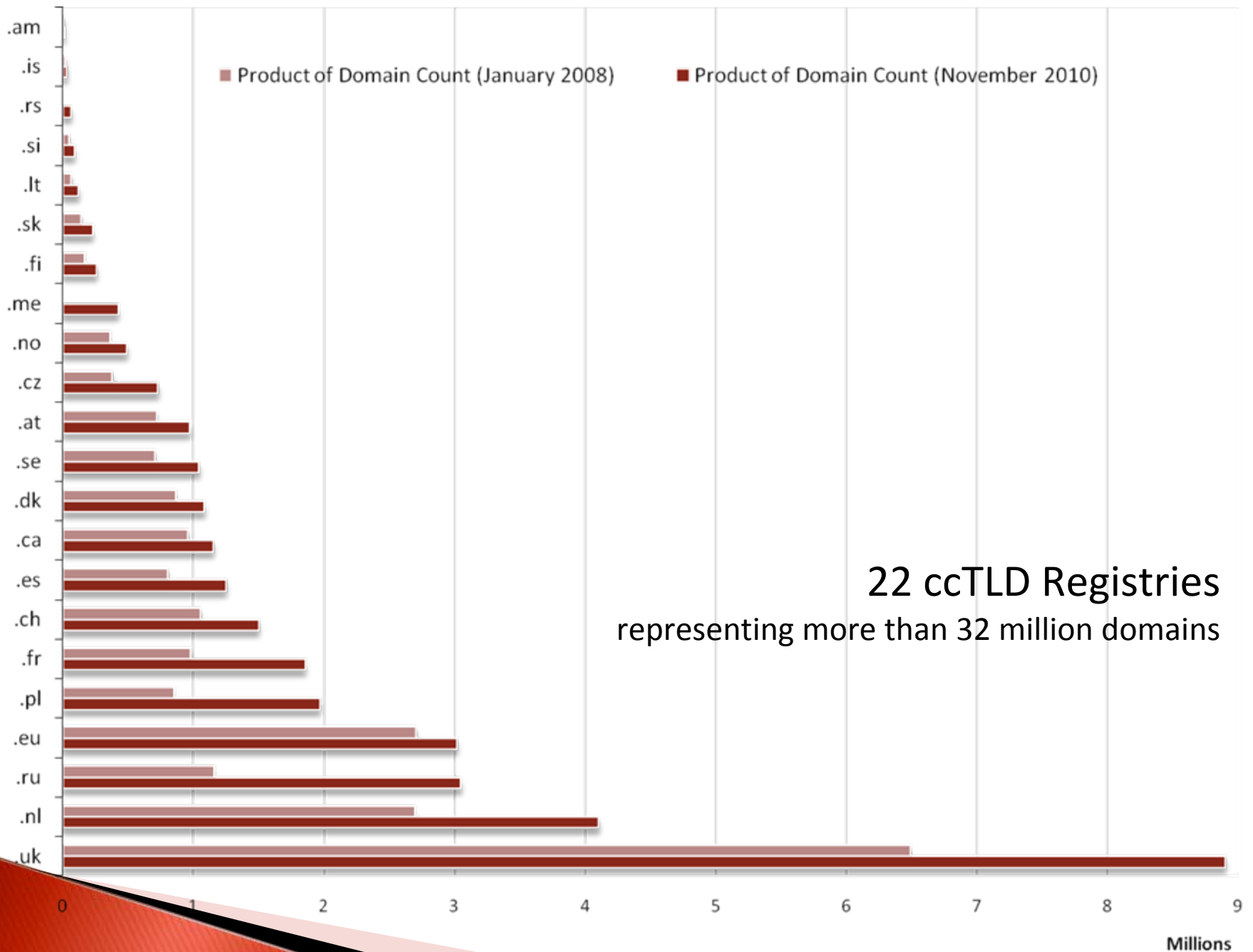
2010 Member Statistical Survey

- ▶ Examples of potential use of data
 1. Internal reports for full members only
 2. Public reports on specific topics (IDNs, DNSSEC etc) such as CENTR Issue Papers
 3. Newsletters
 4. Background/additional support data.
 5. Contribution to CENTR database (centralising European ccTLD data)
 6. To make a distinction from A Level survey

The Survey:

- <https://www.centr.org/main/ext/survey-management/running-surveys>
- 53 questions on : domain counts, registry budget allocations, domain holder information, registrar market shares, registry growth and expected growth, pricing structures and much more.
- 22 registries responded (still open)

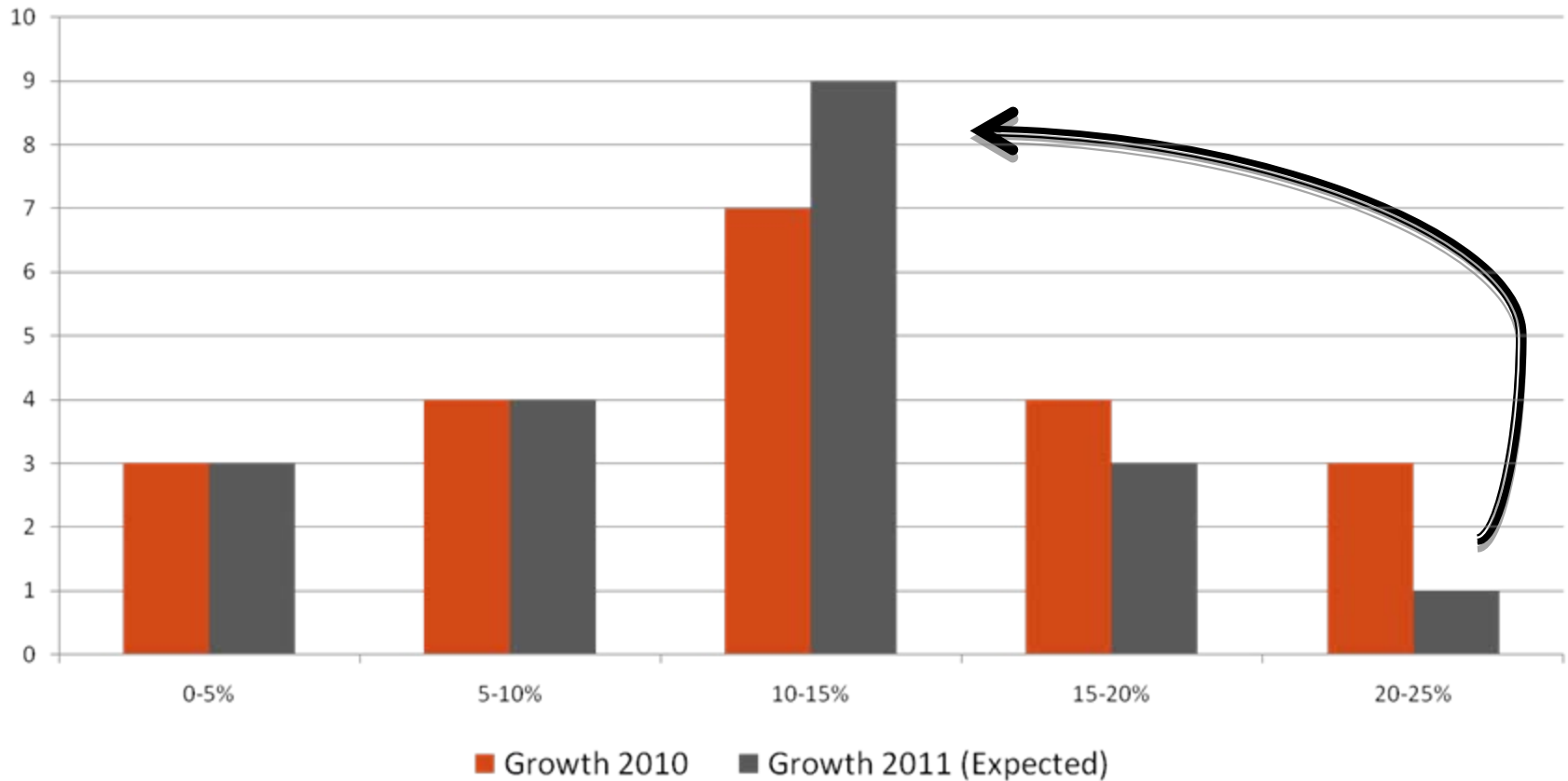
.fr, .es, .cz, .se, .is, .si, .uk, .nl, .lt, .ru, .me, .at,
.no, .rs, .pl, .am, .ch, .dk, .eu, .sk, .fi, .ca



22 ccTLD Registries
representing more than 32 million domains

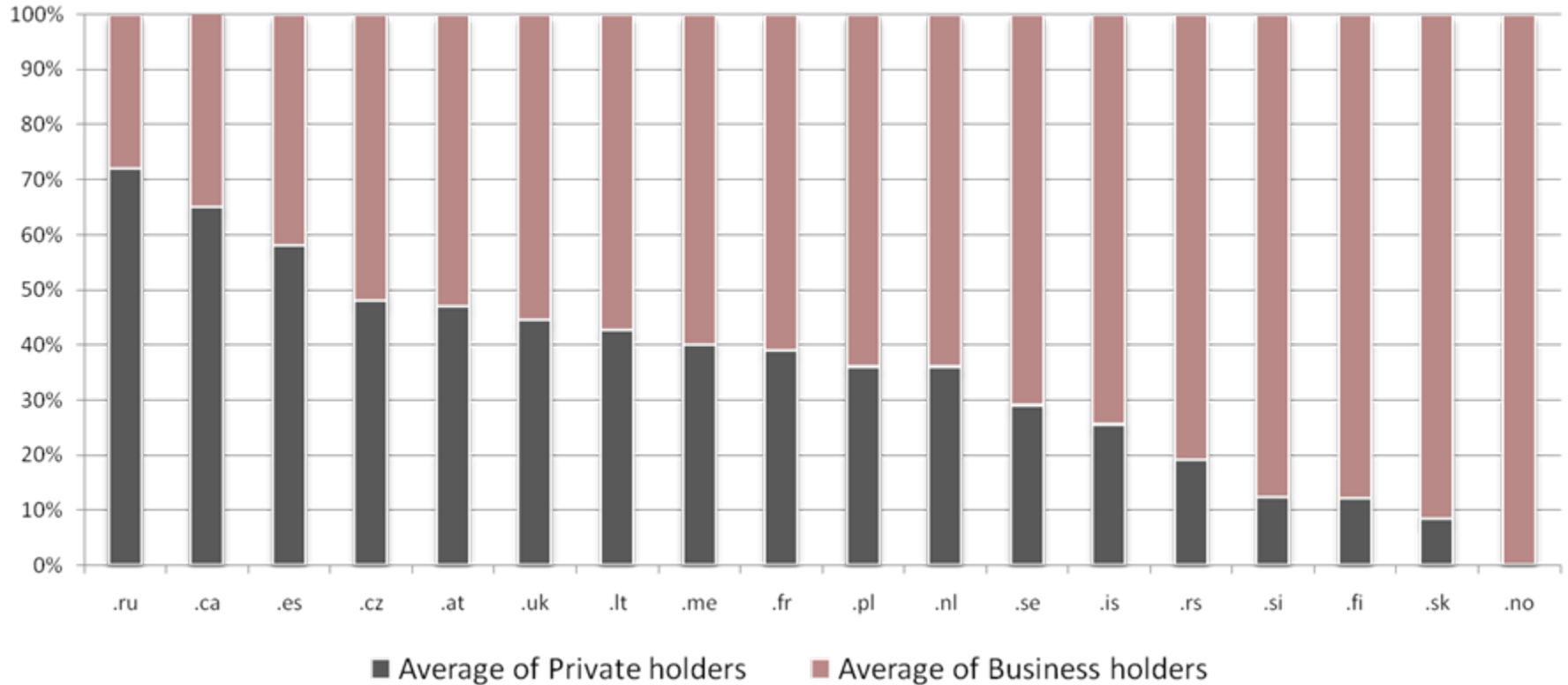
Millions

2011 expected growth vs. 2010 actual

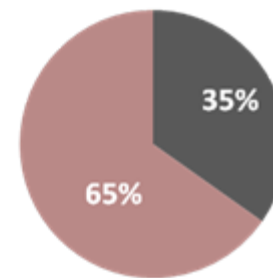


Largest movements were:
.me with 5-10% growth in 2010 and expecting 20-25% in 2011
.ru with 20-25% growth in 2010 and expecting 10-15% in 2011

Breakdown of domain holder type

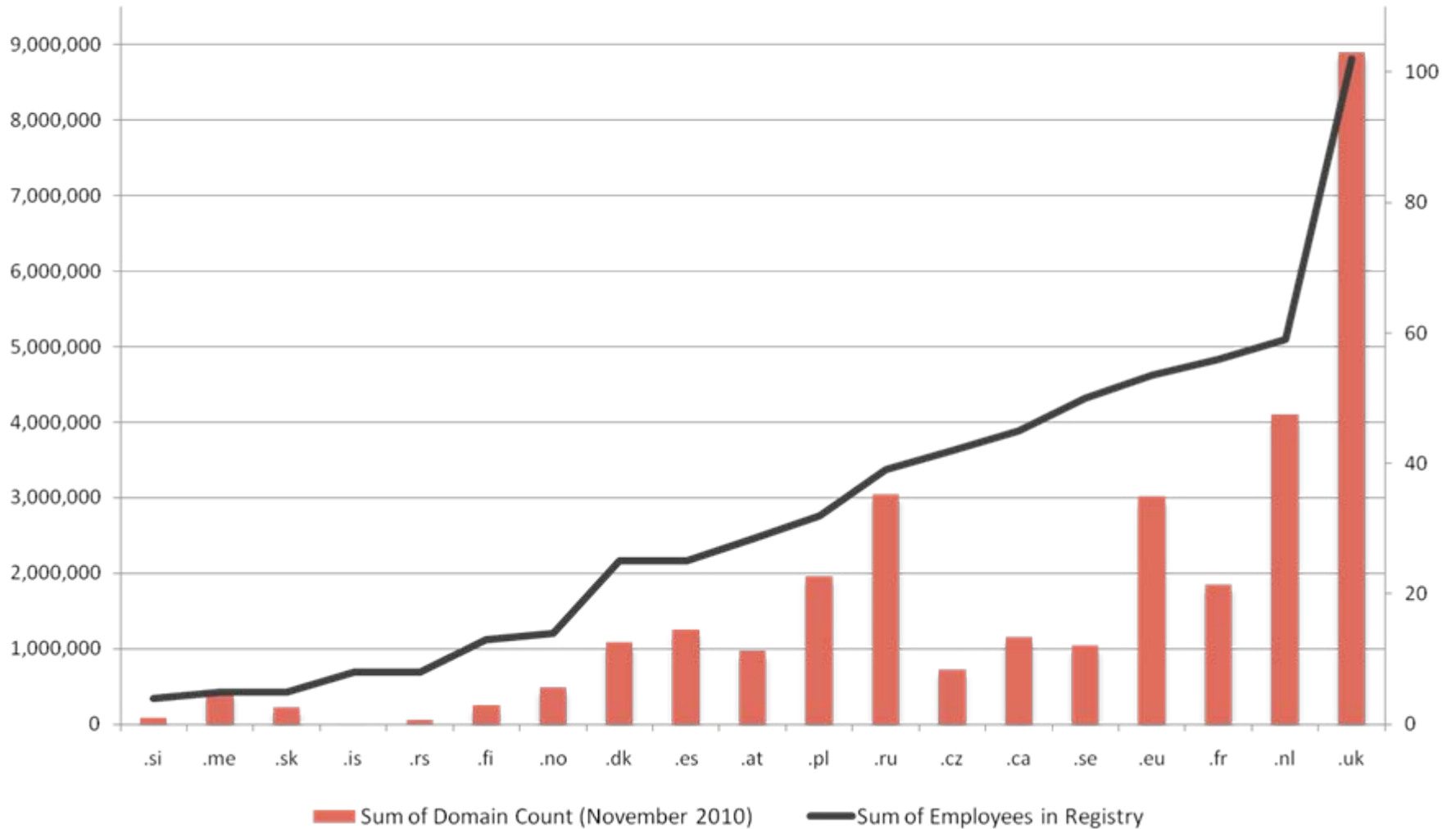


Total Breakdown of domain holder type over all respondents

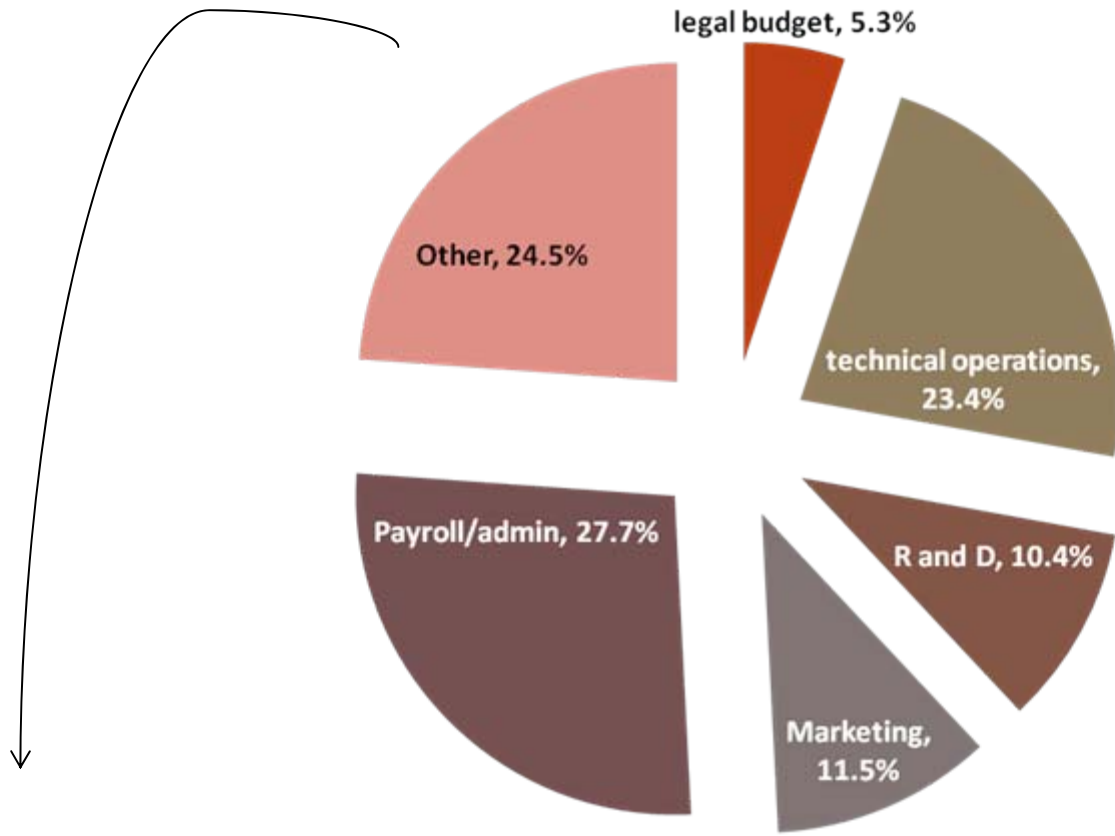


- Private holders
- Business holders

Employees at registry and Registry Size (domain count)



Budget Allocations Average



Other Budget allocations include: policy, security, internal governance, business development, other office admin, HR, Travel expense

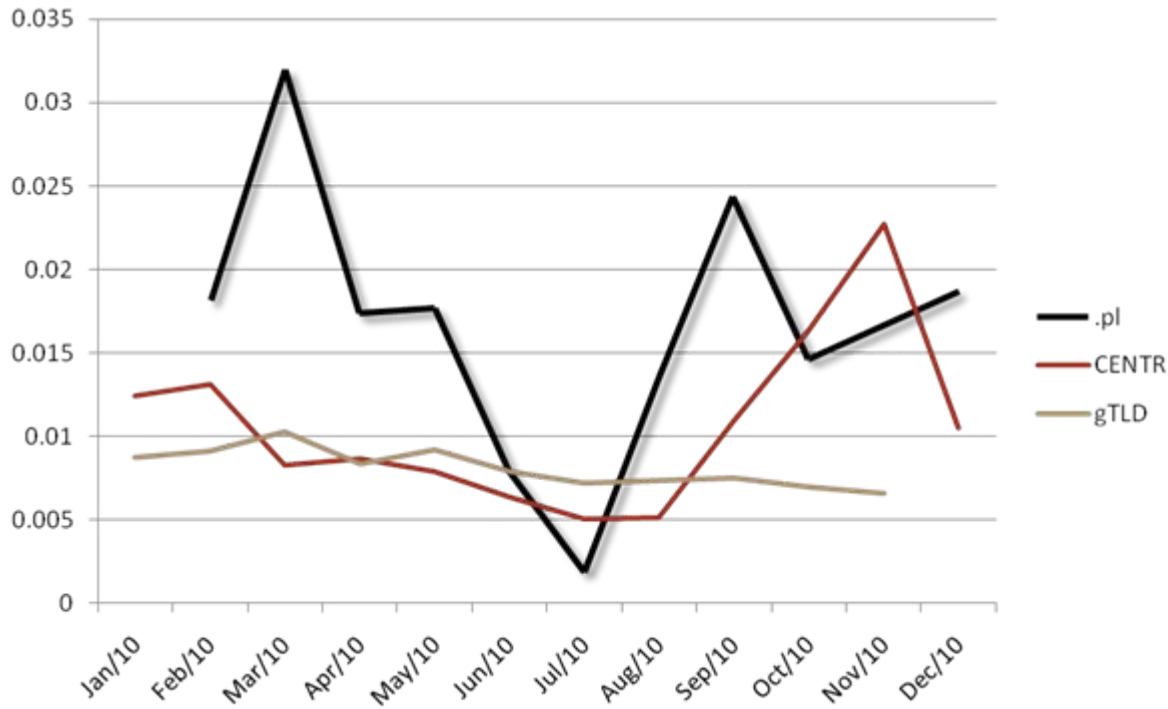
Other metrics for benchmarking

	2010	2008
REGISTRY		
Average (median) % of parked domains	6.1%	6.6%
Country holding most amount of a ccTLD domain after members country residents	Germany	
Average Renewal Rate (2009)	78.7%	
PRICING AND REGISTRATION		
Average price of a direct registration	40 EUR	
Average Registrar price of a domain (1 year)	10.2 EUR	16.5EUR
% of members offering volume discount	18%	
% of members offering direct registration	45%	
REGISTRANT		
Average % of domains held by 10 largest registrants of a member	2.5%	
Average Domains per registrant	2.15	
% of private domain holders	35%	37.2%

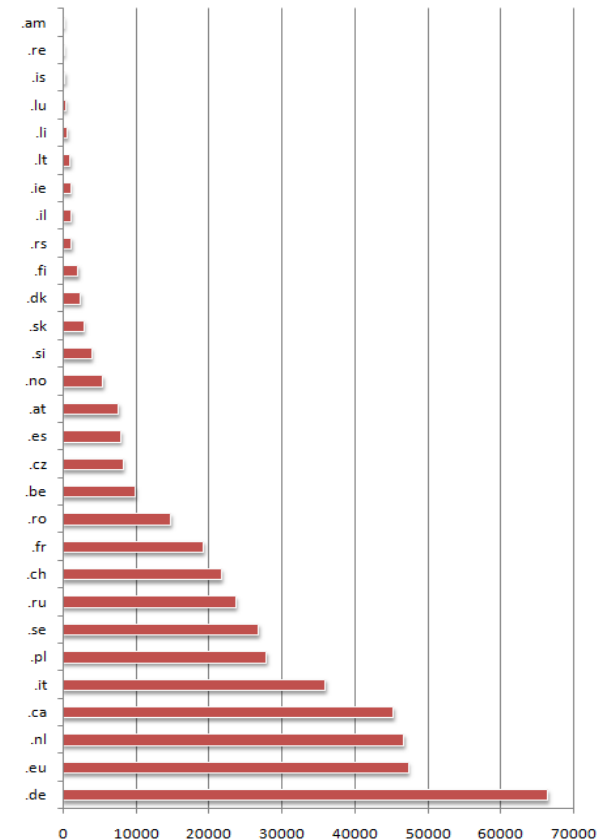
2008 data based on CENTR A-Level Survey and ccTLD statistics report

Stats on demand

- ▶ Objective: to provide ad hoc statistical charts, tables, comparisons etc upon member request.
- ▶ Examples:
 - ▶ - member would like to see their growth rate in a given period shown graphically along with their peers according to registry size.
 - ▶ - member would like to see the number of employees they have compared with their peers (geographical or registry size)



GROWTH (1 MONTH as at 28 Oct 2010)



2. ccTLD as Intermediary?

Mounting pressure on ccTLD operators

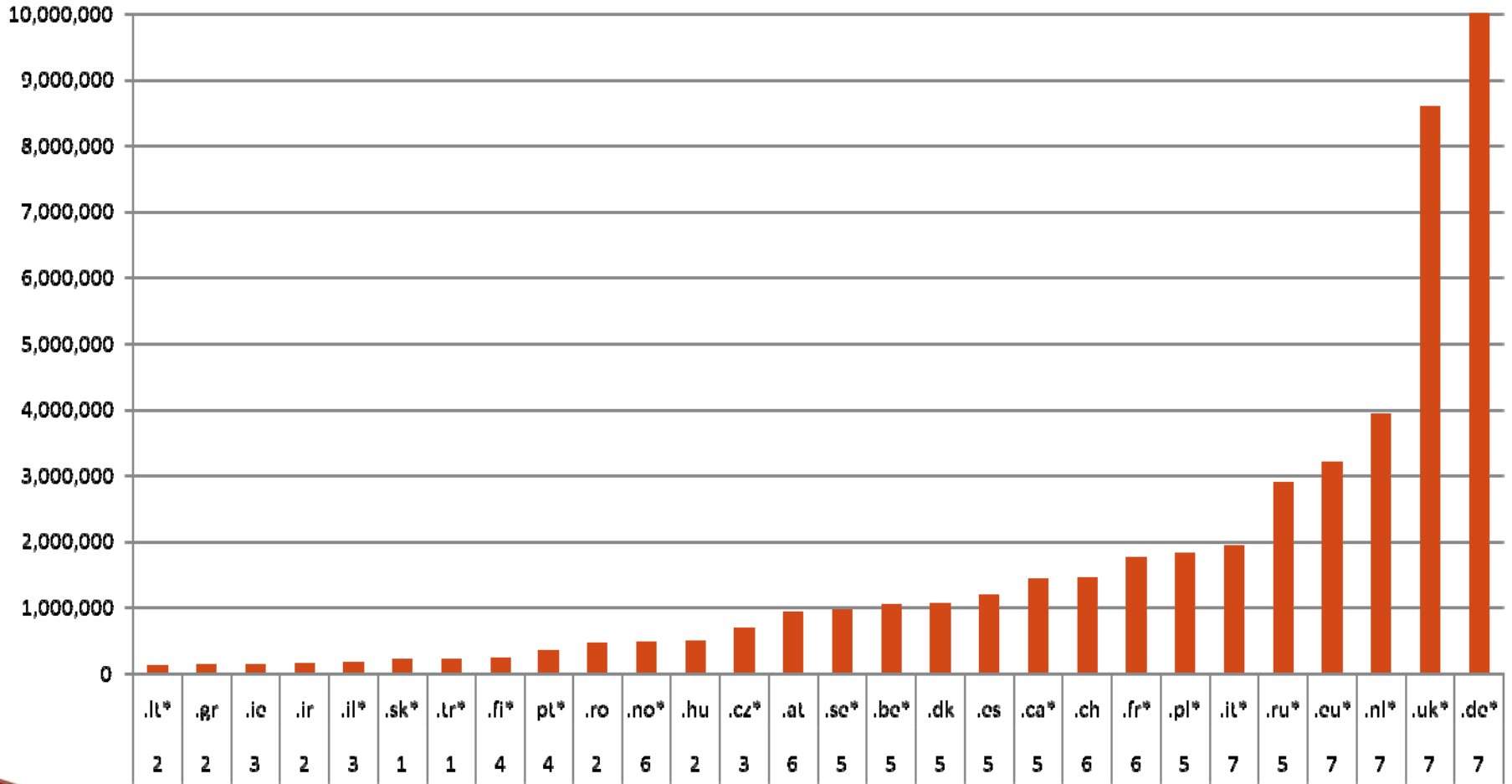
- ▶ Growing pressure from different actors to ask ccTLDs to become more (pro)active in the fight against cybercrime.
 - European Parliament (fight against child abuse)
 - Equalling ccTLDs and ISPs
 - National Governments (Phishing)
 - Request to block a site without court order
 - Council of Europe (fundamental rights)
 - Free speech protection
 - Law Enforcement
 - Whois access

Mounting pressure on ccTLD operators

- ▶ What can we do?
 - Educating regional, national and local authorities
 - Explain the difference between gTLDs and ccTLDs
 - ICANN whois obligations for gTLDs
- ▶ Current status Whois Access for LE
 - Out of 25:
 - 24 have current processes to assist national LE
 - 15 provide conditional access – 10 unconditional
 - 25 enforce T&Cs that terminate an agreement based on false whois info

3. Membership Fee Structure

- Feeband choice is **voluntary**
- Members look at their **peers**
- Members assess the **return** they get
- 7 Feebands (2,5k – 45k)
- Weighted voting on financial issues



	members in band	Revenue	% of revenue
Fee band 1:	19 (39.58%)	42500	6.01%
Fee band 2:	8 (16.67%)	56000	7.92%
Fee band 3:	3 (6.25%)	42000	5.94%
Fee band 4:	2 (4.17%)	39000	5.51%
Fee band 5:	7 (14.58%)	175000	24.73%
Fee band 6:	4 (8.33%)	128000	18.09%
Fee band 7:	5 (10.42%)	225000	31.80%
TOTAL		707500	100.00%

THE END!

Thanks for listening

